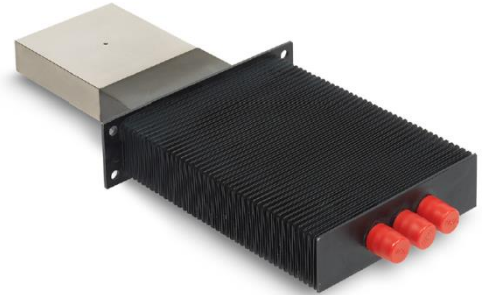


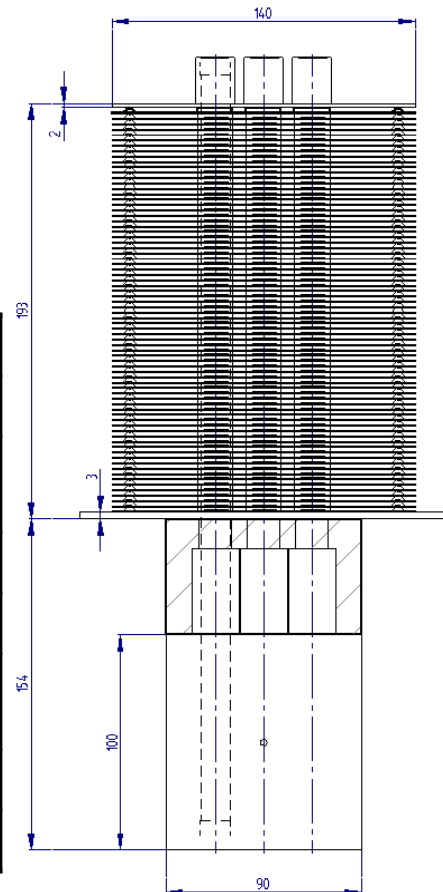
Insulated Heat Pipes system MEIJE

Meije heat pipe system is an exchanger electrically isolated, dedicated to cool powerful IGBT or Diode type components which dissipate a lot of power.



This type of heat cooler offers the possibility to put components on both sides of the evaporator bloc. Assembly is generally realized with press-pack system,

Its dimensions can be modified according to constraints linked with the kind of ventilation (flow and pressure drop) and to space.



Power	500 W
Heat pipe	Water or Ethanol
Working temperature	-28° C to +45° C
Fins	Aluminium
Block	Aluminium
Rth	<90° C/kW with air T° at 20° C
Flow rate	5m/s
Electrical isolation	Up to 6kV, 50 Hz

